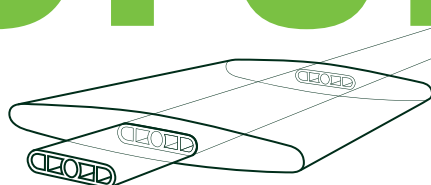


20 REASONS FOR

GREENZONE
PLANTATION SHUTTERS

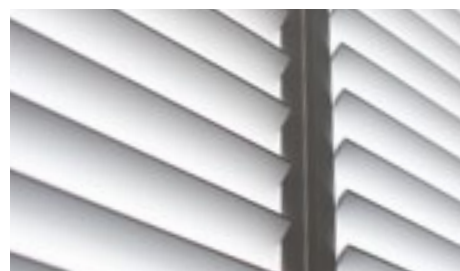


INTERNAL / EXTERNAL WINDOW SHUTTERS

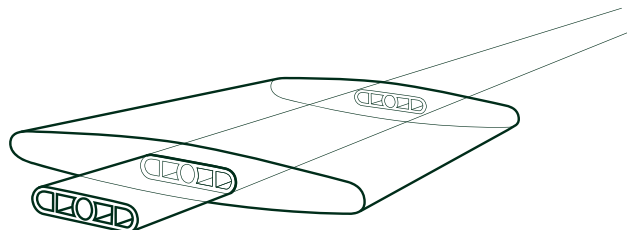
- 1 Engineered and manufactured to exacting specifications for the best Greenzone Plantation shutter performance.
- 2 More moisture and humidity resistant than any timber Greenzone Plantation shutter material.
- 3 Will not crack, chip, split or warp as a shutter under harsh Australian conditions.
- 4 Better than timber for fixing and fastening characteristics.
- 5 Constructed with high strength joints using both stainless steel screws and adhesive.
- 6 Extrusion material is a carbon/ glass fibre reinforced polymer.
- 7 Recyclable.
- 8 Manufactured from hypoallergenic materials.
- 9 Does not support bacterial activity.
- 10 Termite-resistant.
- 11 Insulates better than the equivalent timber Greenzone Plantation shutter.
- 12 Does not support fire combustion.
- 13 Will not sag, creep or deform over time.
- 14 Contains an aluminium insert for higher strength and increased stiffness.
- 15 Finished in Valspar paints
- 16 Surface is repairable and re-coat able.
- 17 Easily cleaned without harsh chemicals.
- 18 UV-resistant.
- 19 Clever sections and detailing helps conceal substrate imperfections in Greenzone Plantation shutters.
- 20 Outperforms all other Greenzone Plantation shutters known and warranted to look as good as new in 20 years.

GREENZONE SHUTTERS ARE SLIM, ELEGANT, CLEAN, SMOOTH AND REFINED PROVIDES THE RICH LOOK OF TIMBER SHUTTERS WITHOUT TIMBERS INHERENT PROBLEMS

PERFORM BETTER
LASTS LONGER THAN TRADITIONAL TIMBER SHUTTERS
INSULATES 70% MORE EFFICIENTLY



Colours	white, bright white and pearl
Blades	elliptical 64mm, 89mm, 115mm
Style Type	51mm beaded
Tilt Road	clear view / centre / offset
Shapes	oval, sunburst, triangular
Frames	L-frames, Z-frame square, T post



ALUMINIUM INSERT
FOR HIGHER STRENGTH AND INCREASED STIFFNESS